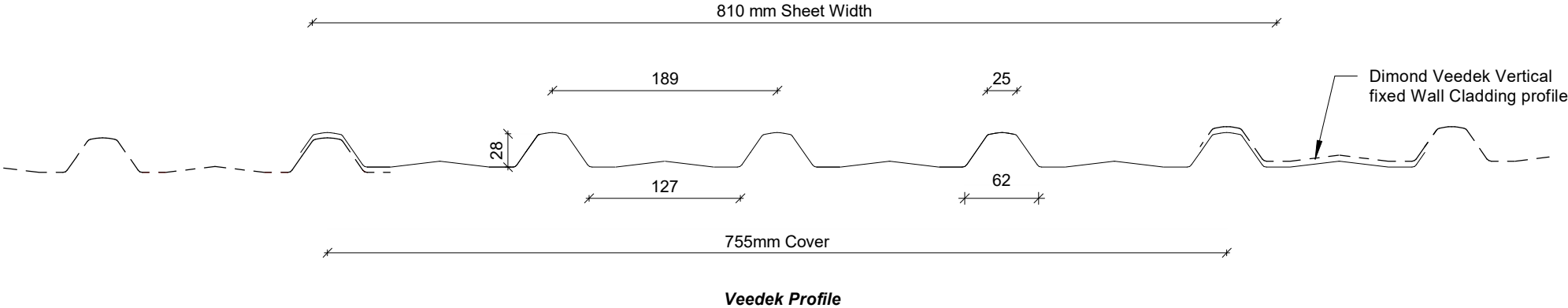


DETAILS:

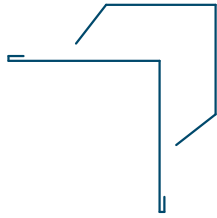
REV:    DATE:

VRVC00	Cover Sheet	1	Jun 2025
VRVC01	Profile Summary	1	Jun 2025
VRVC02	Typical Flashing Detail	1	Jun 2025
VRVC03	Barge Flashing Detail	1	Jun 2025
VRVC04	Transverse Junction Detail	1	Jun 2025
VRVC05	External Corner Detail	1	Jun 2025
VRVC06	Internal Corner Detail	1	Jun 2025
VRVC07	Base Detail	1	Jun 2025
VRVC08	Soffit Detail	1	Jun 2025
VRVC09	Window Head Detail	1	Jun 2025
VRVC10	Window Jamb Detail	1	Jun 2025
VRVC11	Window Sill Detail	1	Jun 2025
VRVC12	Meterbox Head Detail	1	Jun 2025
VRVC13	Meterbox Jamb Detail	1	Jun 2025
VRVC14	Meterbox Sill Detail	1	Jun 2025
VRVC15	Pipe Penetration Detail	1	Jun 2025
VRVC16	Cladding to Concrete Junction Detail	1	Jun 2025
VRVC17	Cladding to Brick Junction Detail	1	Jun 2025
VRVC18	Cladding to Panel Junction Detail	1	Jun 2025
VRVC19	3D Window Flashing Detail	1	Jun 2025

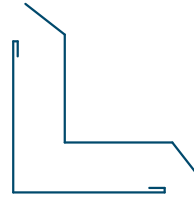
PROFILE OVERVIEW	
MINIMUM PITCH	3°
RIB TYPE	Low
RIBS PER SHEET	5 Ribs per sheet
WIDTH	755mm Cover, 810mm Sheet



# Profile Summary



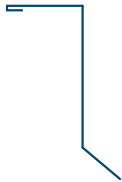
**External Corner Flashing**



**Internal Corner Flashing**



**Base Flashing**



**Soffit Flashing**



**Window Head Flashing**



**Window Jamb Flashing**

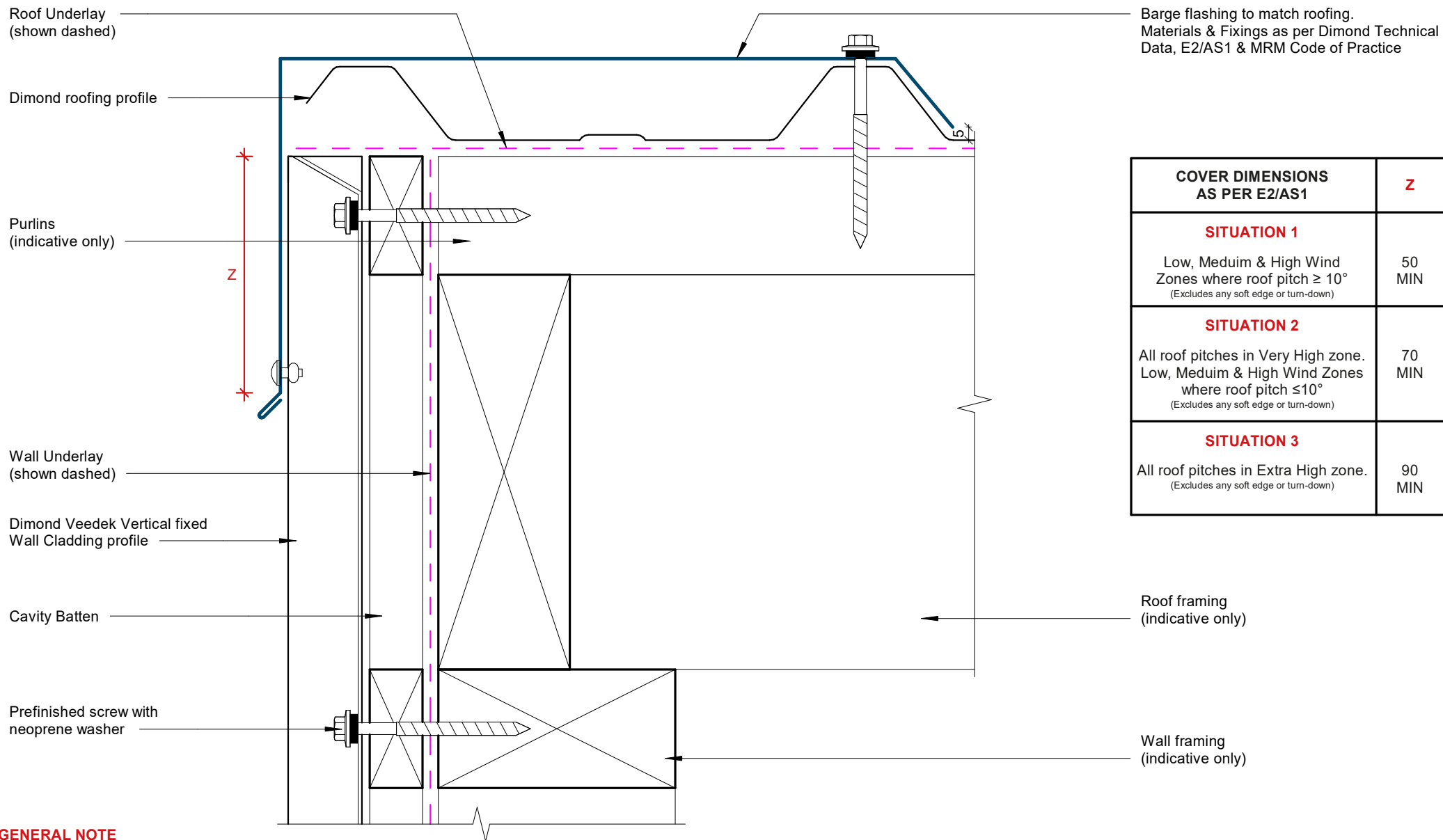


**Window Sill Flashing**

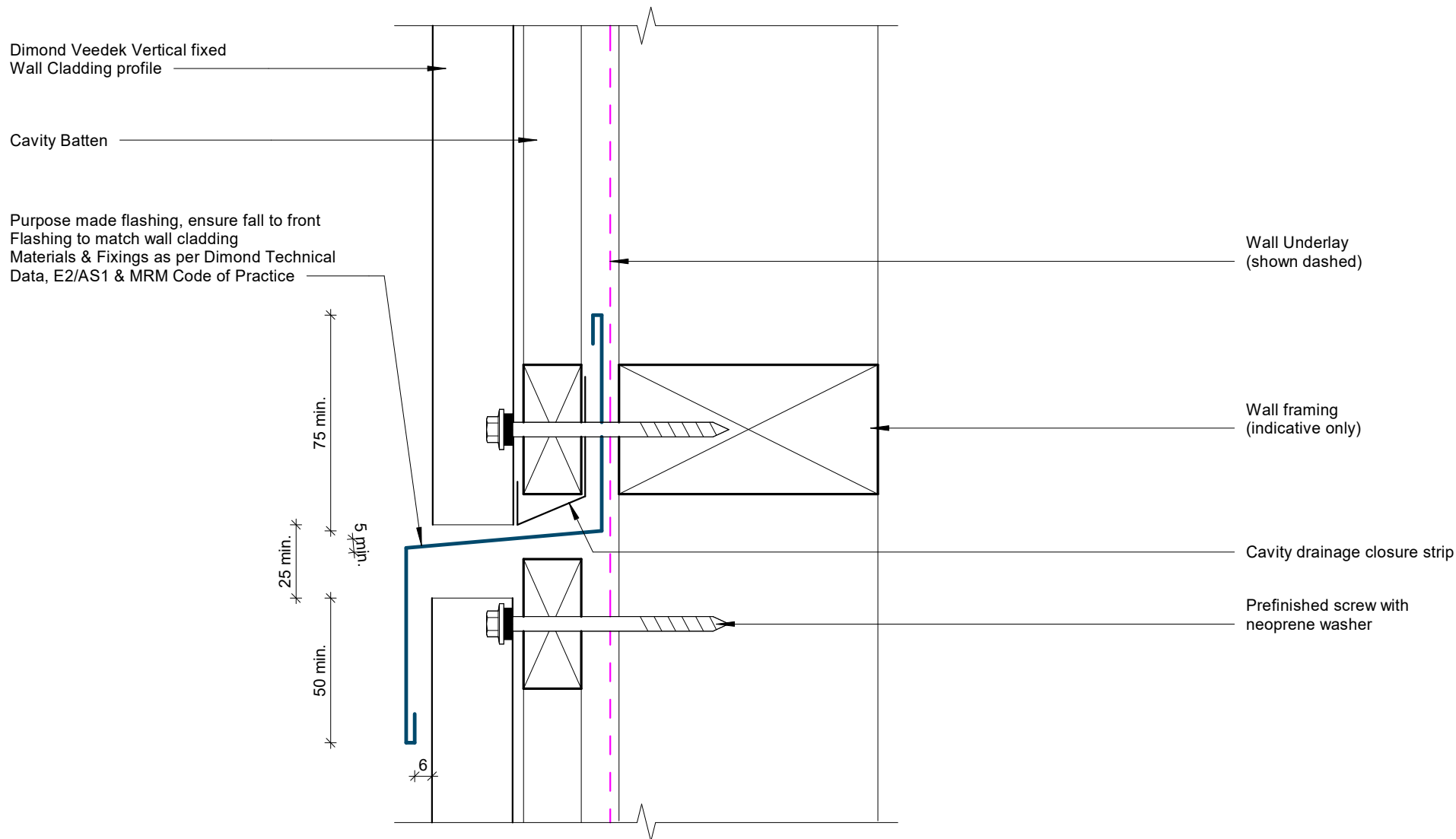


**Transverse Flashing**

## Typical Flashing Detail



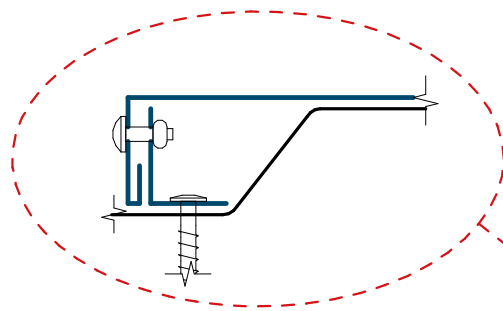
## Barge Flashing Detail



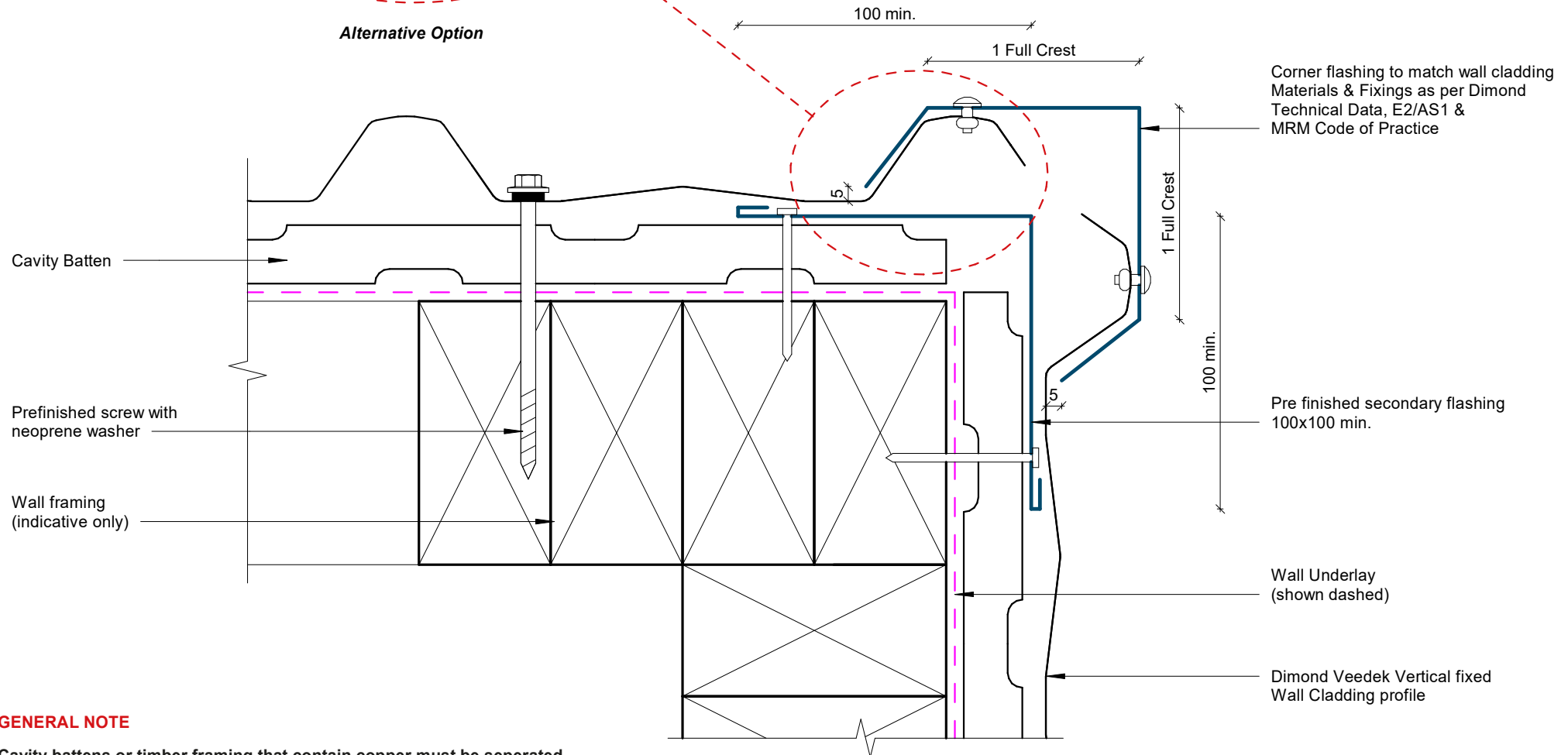
#### GENERAL NOTE

Cavity battens or timber framing that contain copper must be separated from steel cladding by a strip of wall or roof underlay or DPC.

## Transverse Junction Detail



**Alternative Option**

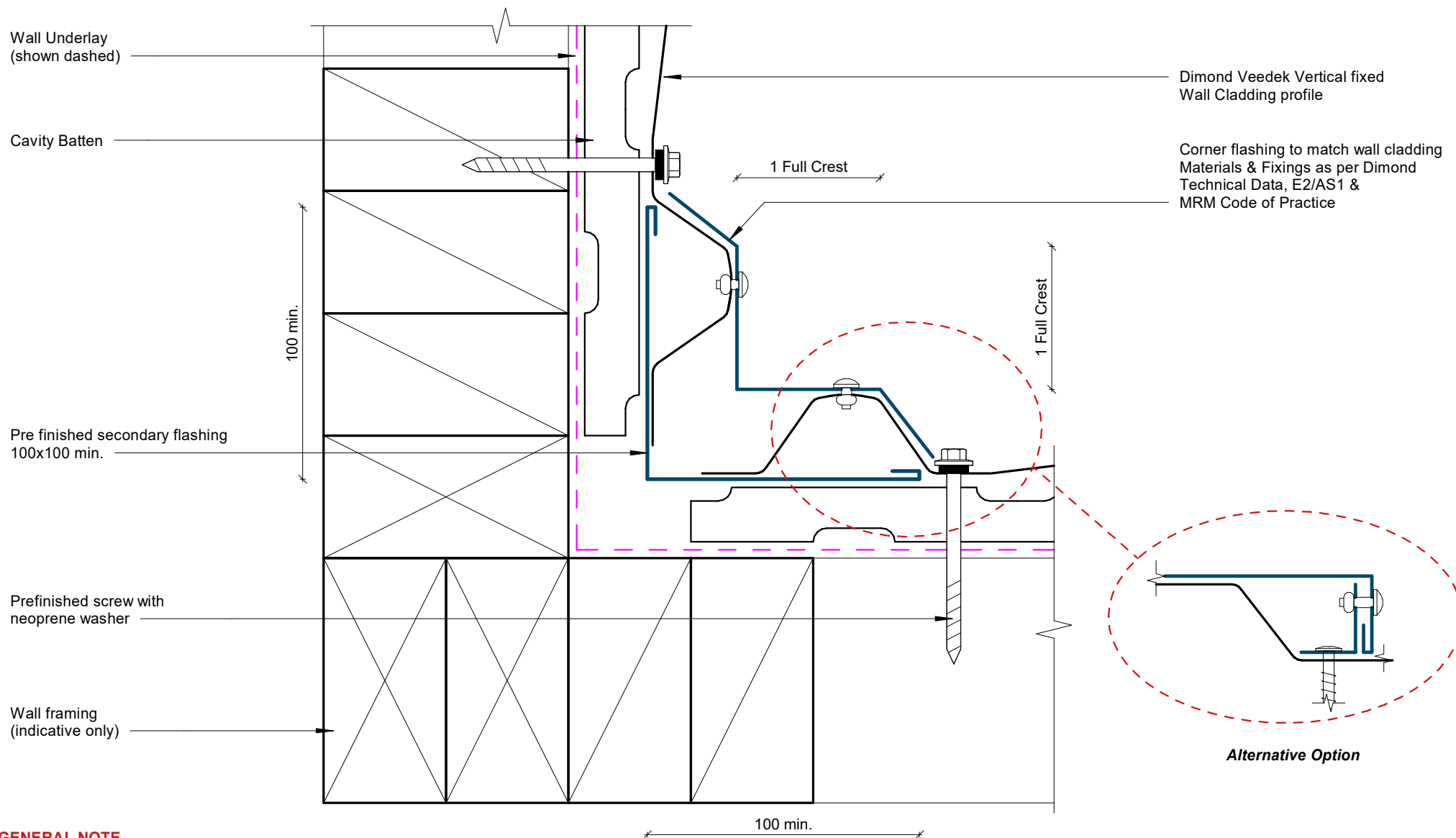


**GENERAL NOTE**

Cavity battens or timber framing that contain copper must be separated from steel cladding by a strip of wall or roof underlay or DPC.

## External Corner Detail

Rev: 1 **Veedek Residential Vertical Cladding**

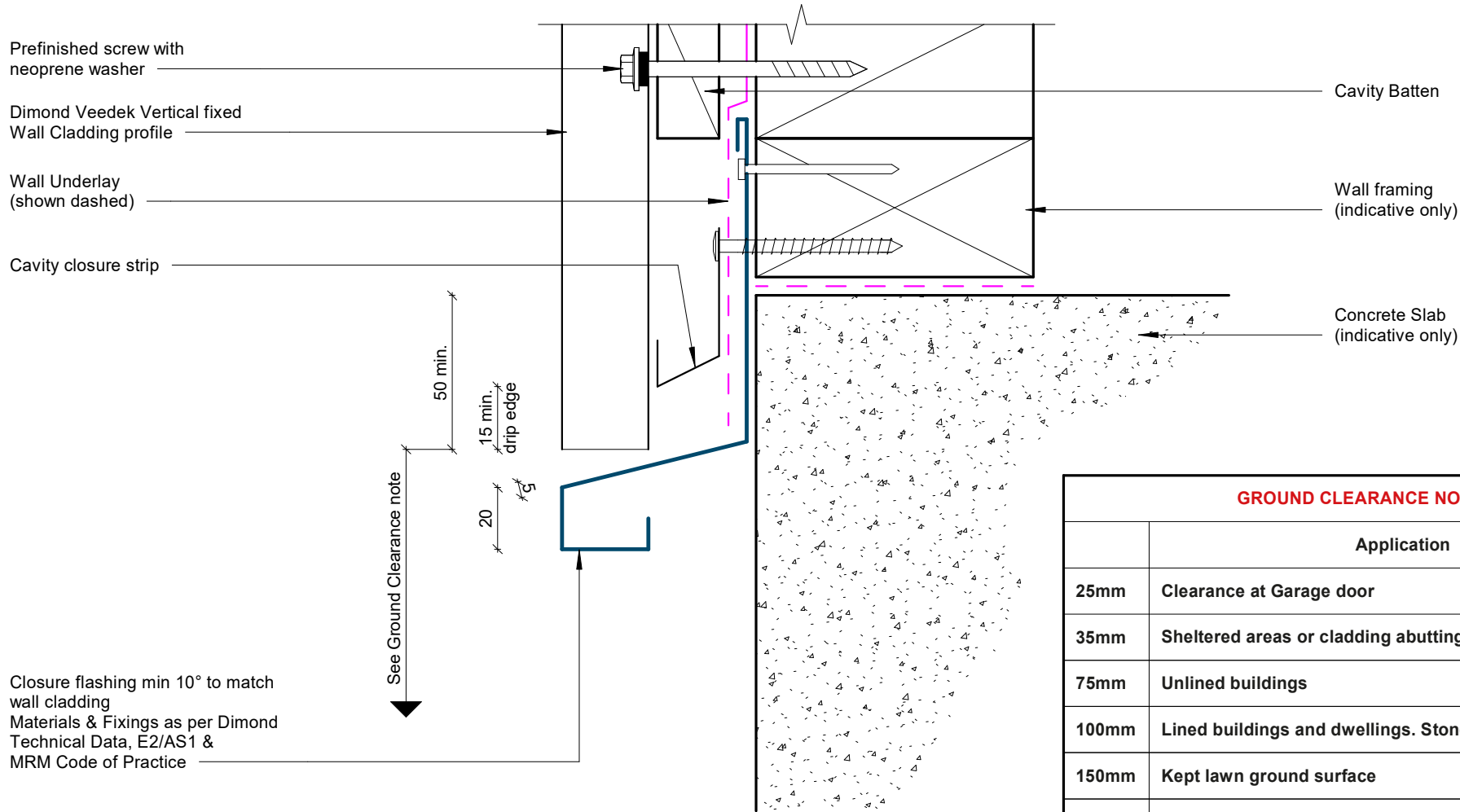


#### GENERAL NOTE

Cavity battens or timber framing that contain copper must be separated from steel cladding by a strip of wall or roof underlay or DPC.

## Internal Corner Detail

Rev: 1 Veedek Residential Vertical Cladding



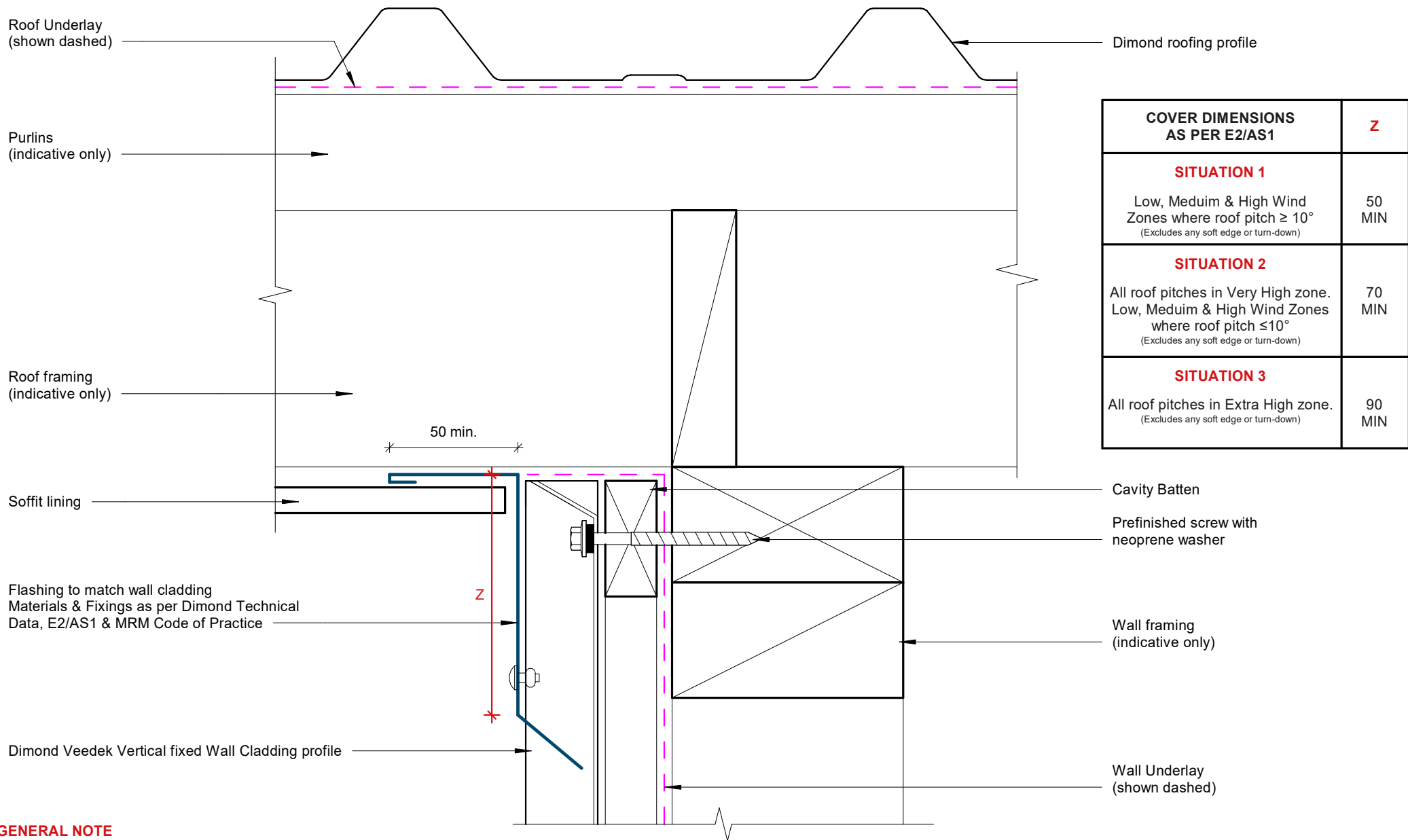
GROUND CLEARANCE NOTE	
	Application
25mm	Clearance at Garage door
35mm	Sheltered areas or cladding abutting a deck
75mm	Unlined buildings
100mm	Lined buildings and dwellings. Stone chip ground surface
150mm	Kept lawn ground surface
175mm	Pasture ground surface

**GENERAL NOTE**

Cavity battens or timber framing that contain copper must be separated from steel cladding by a strip of wall or roof underlay or DPC.

# Base Detail





#### GENERAL NOTE

Cavity battens or timber framing that contain copper must be separated from steel cladding by a strip of wall or roof underlay or DPC.

## Soffit Detail

Additional wrap & flashing tape over head flashing  
(shown dashed)

Cavity Batten

Prefinished screw with  
neoprene washer

Dimond Veedek Vertical fixed  
Wall Cladding profile

Cavity closure strip

Purpose made head flashing min 15° fall to top  
Flashing to match wall cladding  
Materials & Fixings as per Dimond Technical  
Data, E2/AS1 & MRM Code of Practice

Sealant used for very high  
wind zones and above

Line of jamb flashing behind

Wall Underlay  
(shown dashed)

Wall framing  
(indicative only)

Wall lining  
(indicative only)

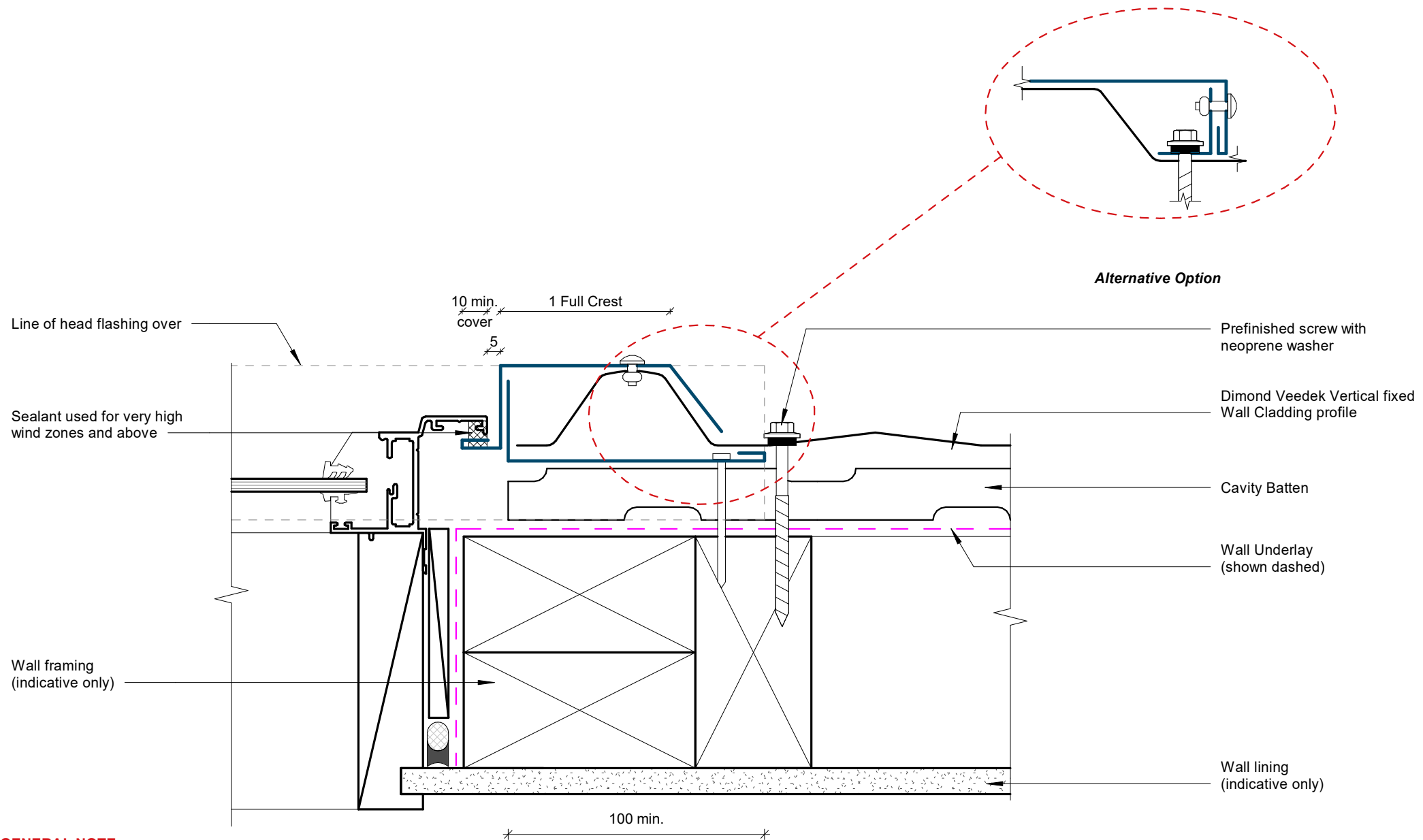
15 min.  
drip edge  
50 min.  
10 min  
cover

75 min.

## GENERAL NOTE

Cavity battens or timber framing that contain copper must be separated from steel cladding by a strip of wall or roof underlay or DPC.

# Window Head Detail

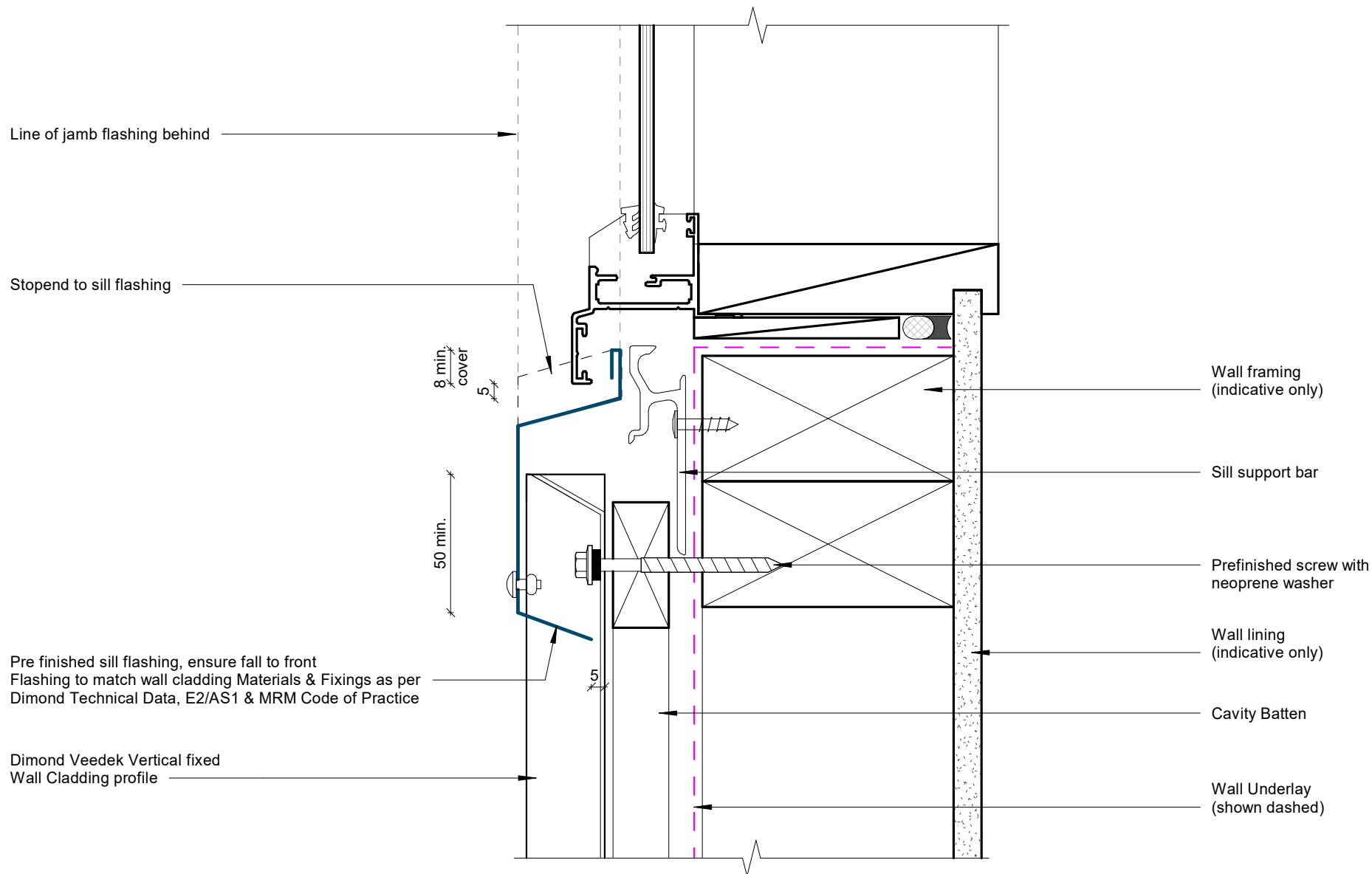


#### GENERAL NOTE

Cavity battens or timber framing that contain copper must be separated from steel cladding by a strip of wall or roof underlay or DPC.

## Window Jamb Detail

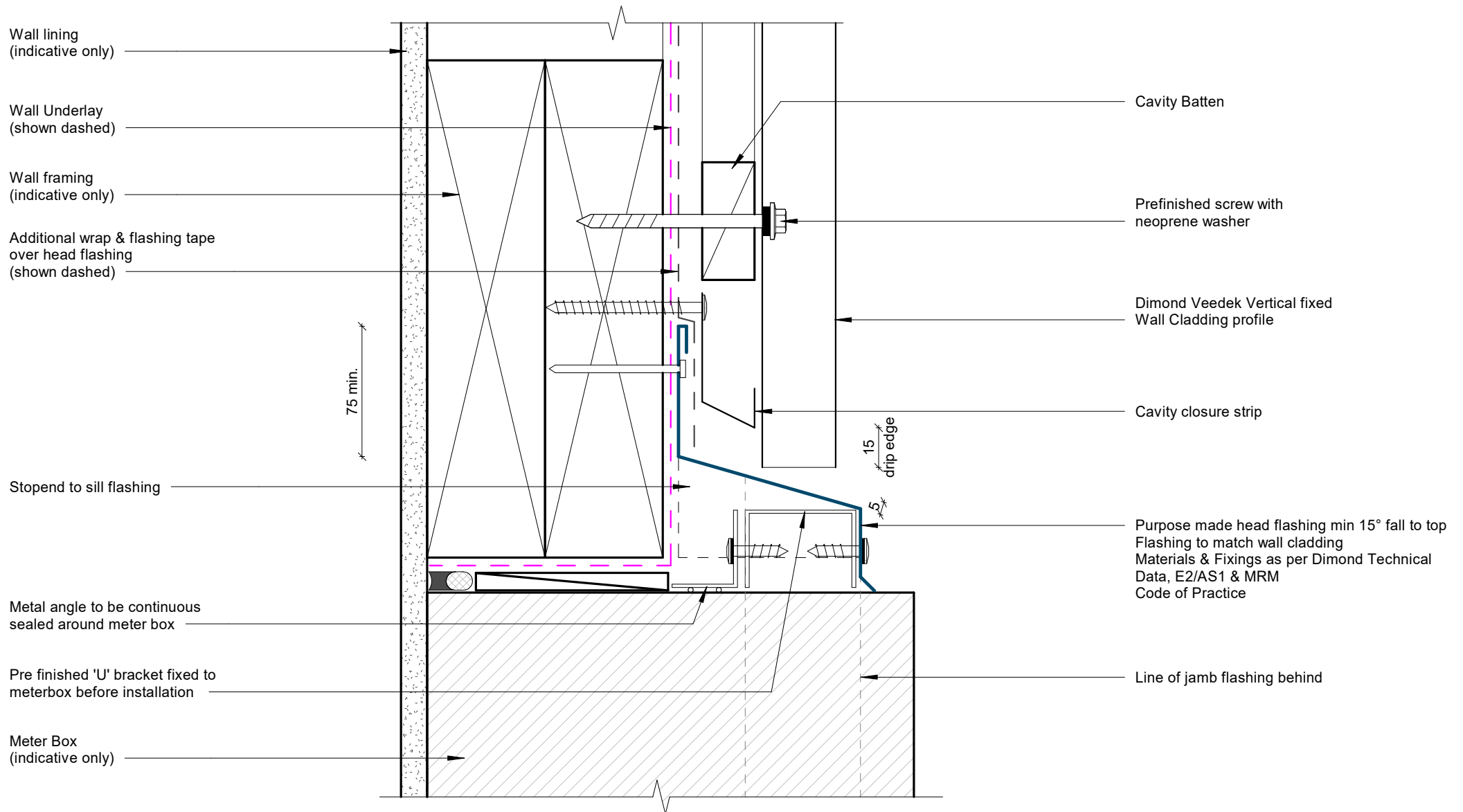
Rev: 1 **Veedek Residential Vertical Cladding**



#### GENERAL NOTE

Cavity battens or timber framing that contain copper must be separated from steel cladding by a strip of wall or roof underlay or DPC.

## Window Sill Detail

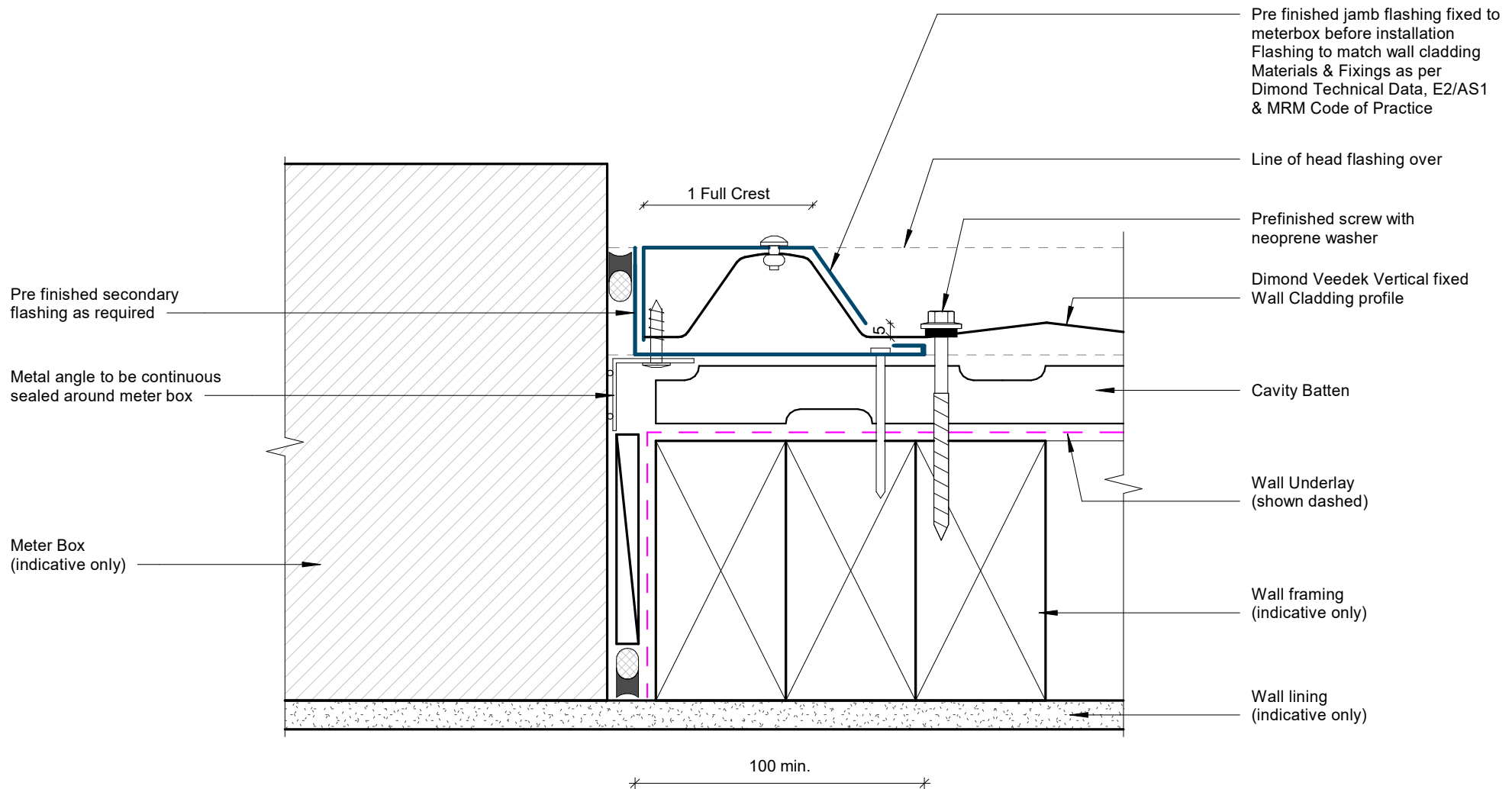


#### GENERAL NOTE

Cavity battens or timber framing that contain copper must be separated from steel cladding by a strip of wall or roof underlay or DPC.

## Meterbox Head Detail

Rev: 1 **Veedek Residential Vertical Cladding**

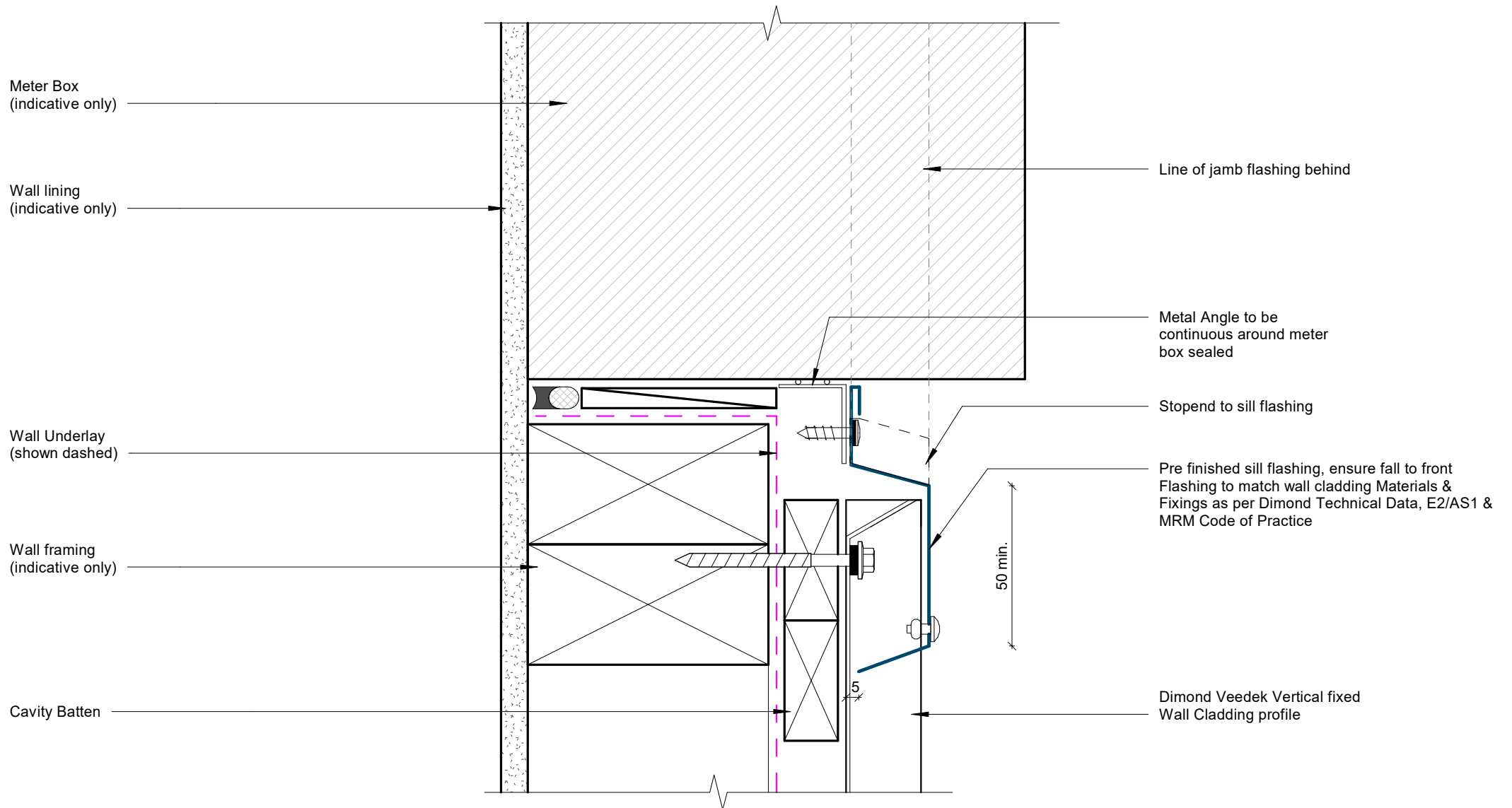


#### GENERAL NOTE

Cavity battens or timber framing that contain copper must be separated from steel cladding by a strip of wall or roof underlay or DPC.

## Meterbox Jamb Detail

Rev: 1 **Veedek Residential Vertical Cladding**

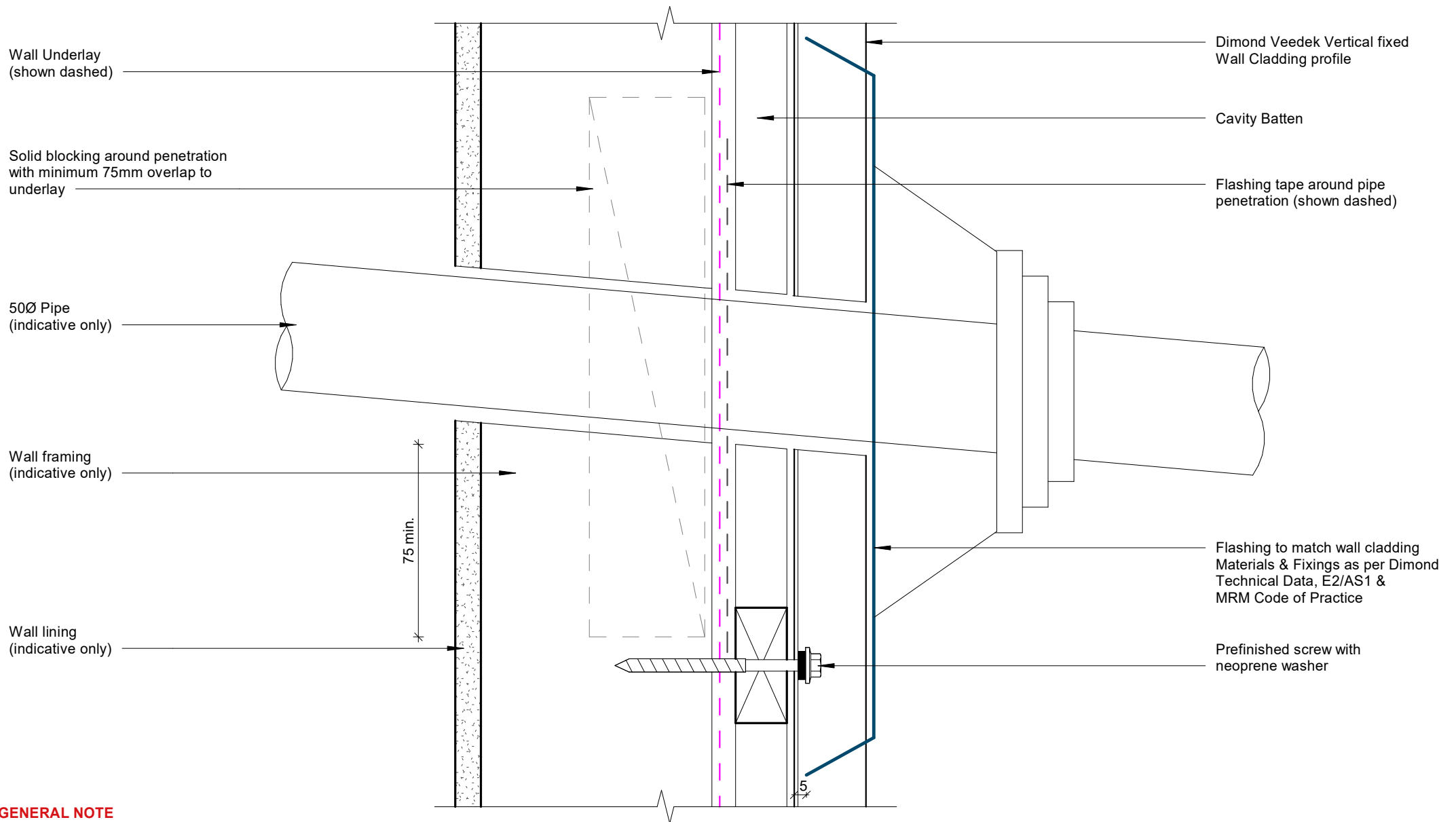


#### GENERAL NOTE

Cavity battens or timber framing that contain copper must be separated from steel cladding by a strip of wall or roof underlay or DPC.

## Meterbox Sill Detail

Rev: 1 **Veedek Residential Vertical Cladding**



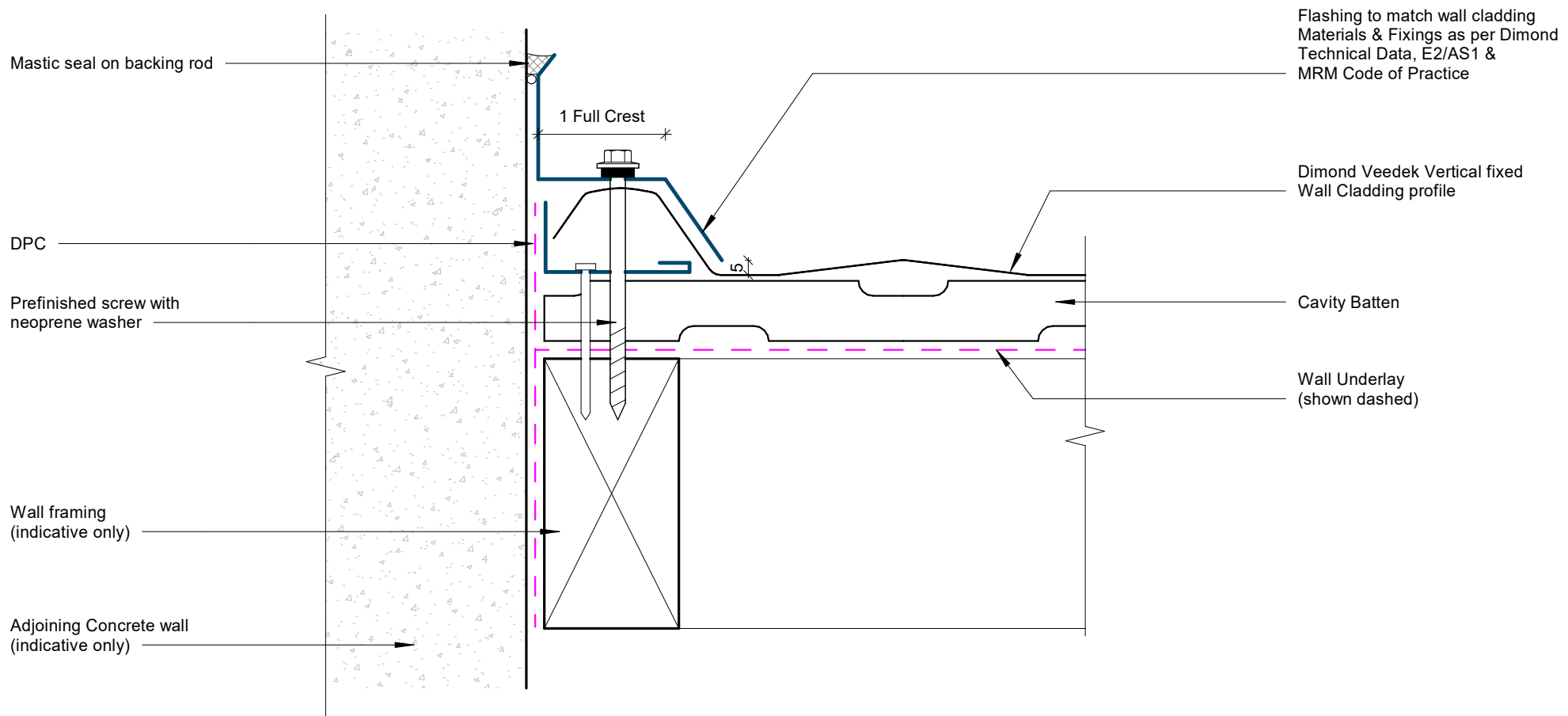
#### GENERAL NOTE

Cavity battens or timber framing that contain copper must be separated from steel cladding by a strip of wall or roof underlay or DPC.

## Pipe Penetration Detail

Rev: 1 Veedek Residential Vertical Cladding





#### GENERAL NOTE

Cavity battens or timber framing that contain copper must be separated from steel cladding by a strip of wall or roof underlay or DPC.

## Cladding to Concrete Junction Detail

Adjoining Brick veneer on cavity  
(indicative only)

Mastic seal on backing rod

Rawplug

Prefinished screw

Wall framing  
(indicative only)

1 Full Crest

Flashing to match wall cladding  
Materials & Fixings as per Dimond  
Technical Data, E2/AS1 &  
MRM Code of Practice

Dimond Veedek Vertical fixed  
Wall Cladding profile

Cavity Batten

Wall Underlay  
(shown dashed)

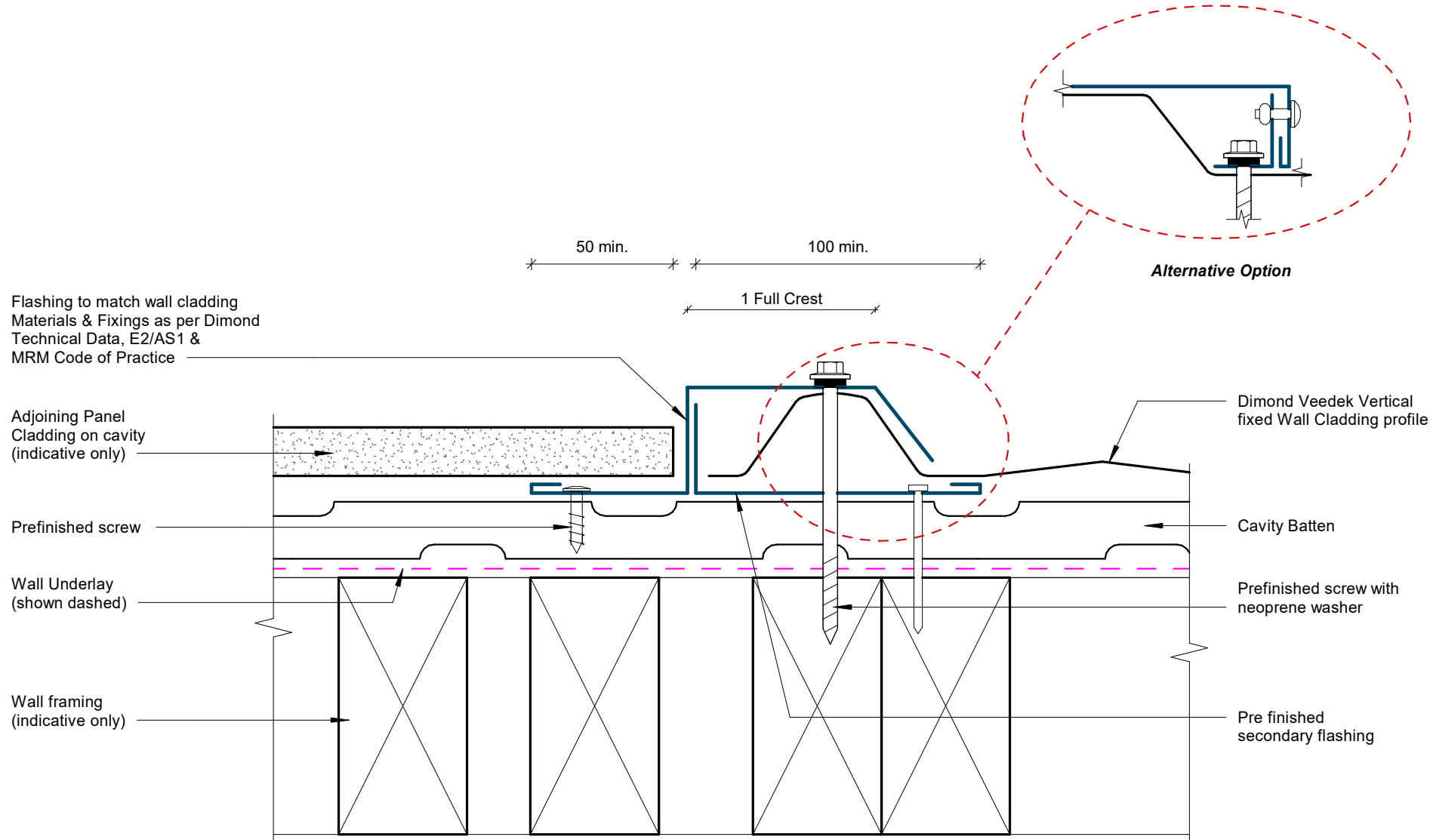
Prefinished screw with  
neoprene washer

## GENERAL NOTE

Cavity battens or timber framing that contain copper must be separated from steel cladding by a strip of wall or roof underlay or DPC.

# Cladding to Brick Junction Detail

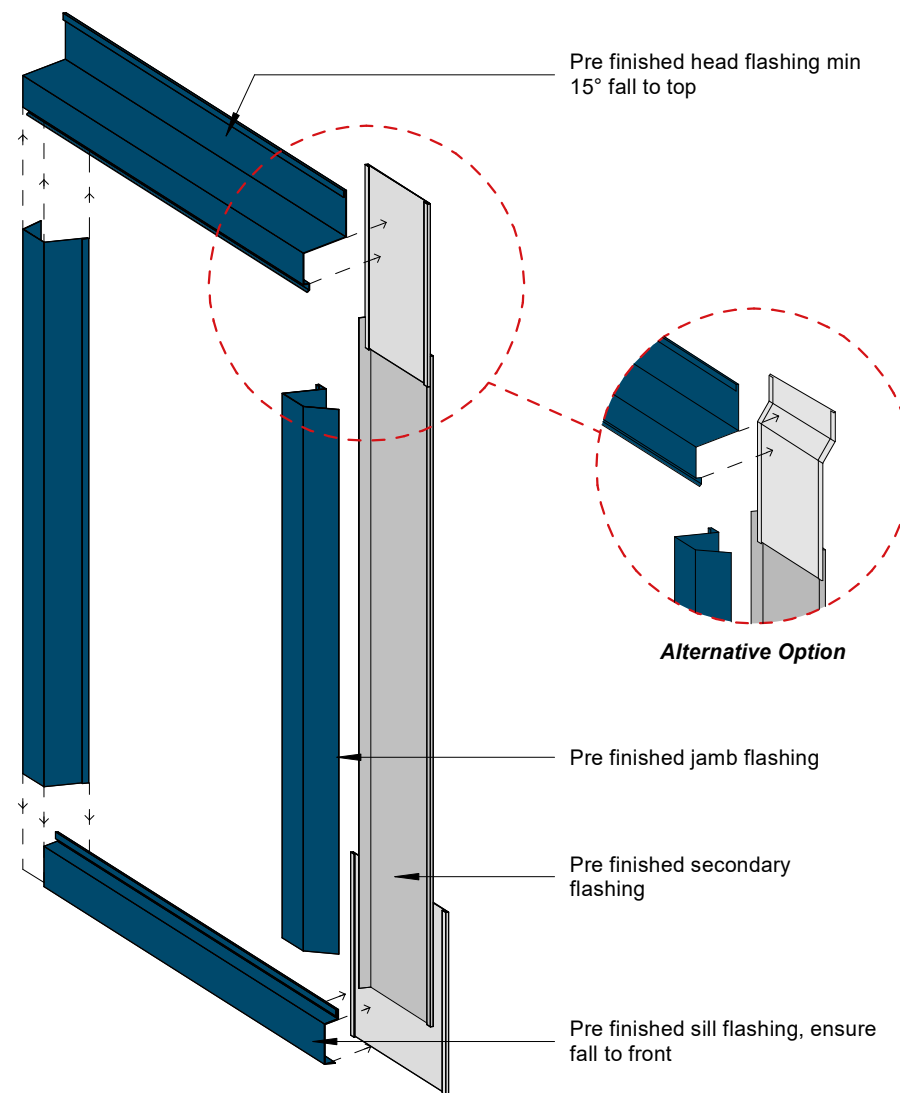
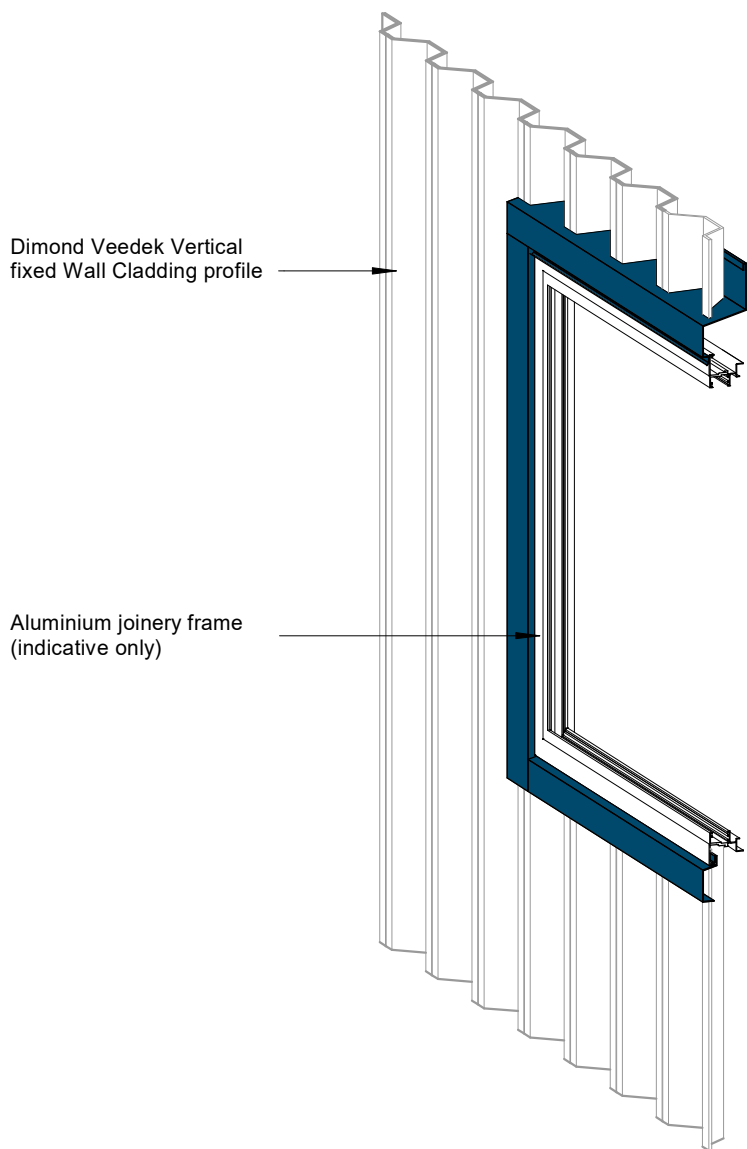
Rev: 1 **Veedek Residential Vertical Cladding**



#### GENERAL NOTE

Cavity battens or timber framing that contain copper must be separated from steel cladding by a strip of wall or roof underlay or DPC.

## Cladding to Panel Junction Detail



#### GENERAL NOTE

Cavity battens or timber framing that contain copper must be separated from steel cladding by a strip of wall or roof underlay or DPC.

Flashing to match wall cladding

Materials & Fixings as per Dimond Technical Data, E2/AS1 & MRM Code of Practice

## 3D Window Flashing Detail

Rev: 1

Veedek Residential Vertical Cladding